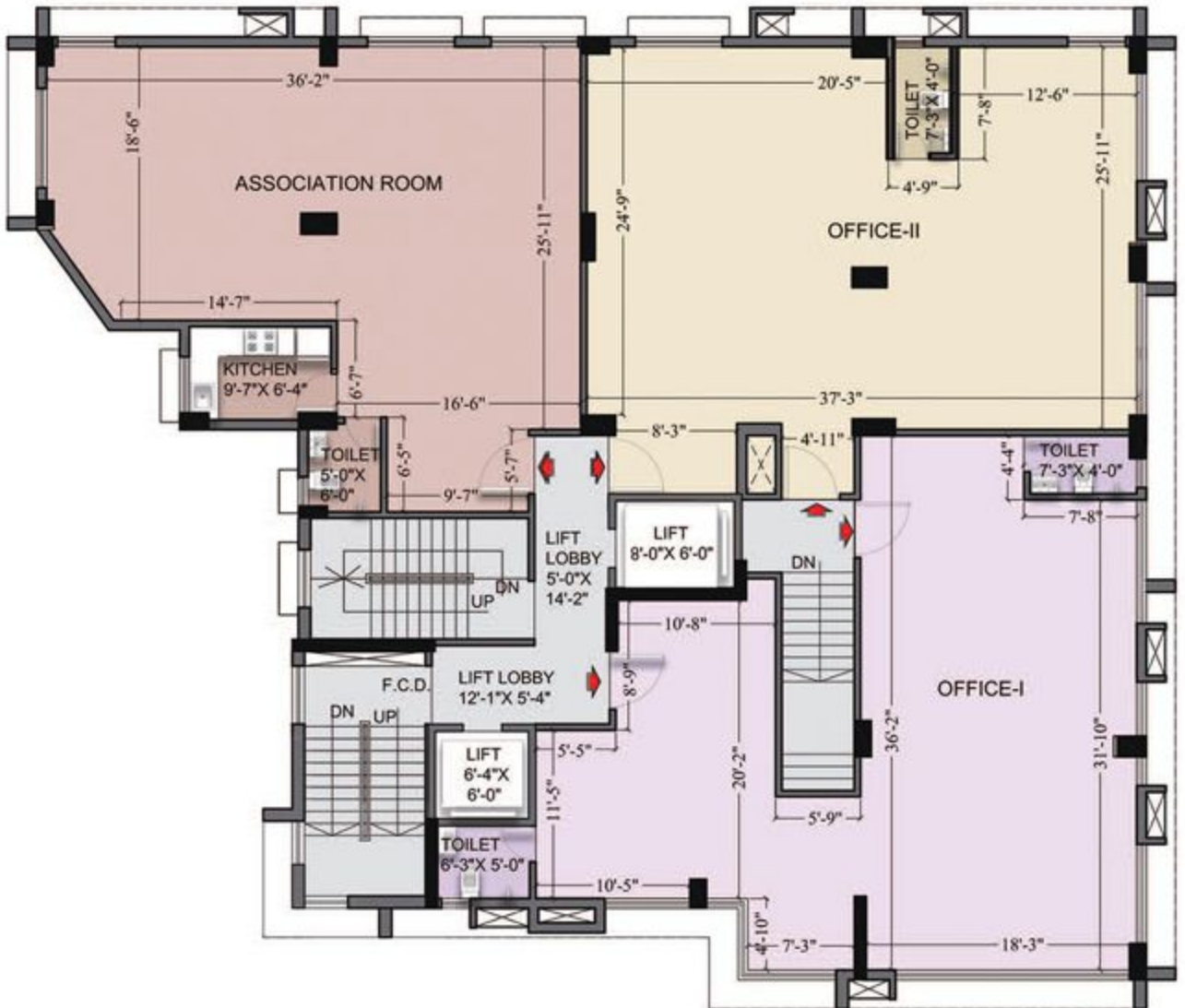


POLYLINE DRAWING COMMERCIAL (1st Floor)



Commercial

FLOOR - 1st		Area in Sq. Ft.	
Mark	Carpet Area (Inc. C.B.)	Built-up Area	Super Built-up Area
OFFICE - I	1060	1174	1608
OFFICE - II	1031	1097	1503
ASSOCIATION ROOM	924	1000	Not salable

POLYLINE DRAWING FURNITURE LAYOUT (2nd to 12th Floor)



Residential

FLOOR - Typical (2nd to 12th)					Area in Sq. Ft.
Flat Mark	Flat Type	Carpet Area (Inc. C.B.)	Balcony Area	Built-up Area	Super Built-up Area
A	3 BHK + 3T	895	65	1045	1431
B	4 BHK + 3T	1281	89	1465	2007
C	2 BHK + 2T + 1S	824	30	926	1268

ISOMETRIC VIEW WITH FURNITURE LAYOUT (2nd to 12th Floor)



Flat Mark - A

3BHK

GRIHAM HEIGHTS



Flat Mark - B

4BHK

ISOMETRIC VIEW WITH FURNITURE LAYOUT (2nd to 12th Floor)



Flat Mark - C

2BHK + 1S

